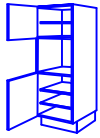
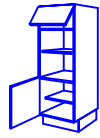


**für Einbaugeräte**

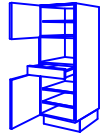
VB 350



VMB 410



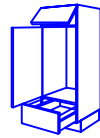
VM 350



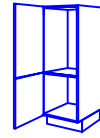
VK 100



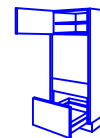
VKZ 150



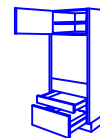
VKK 500



VXZ 65K



VXA 65K

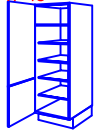


**Hochschränke X-Höhe**

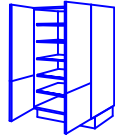
Korpshöhe: 204,8cm

Schranktiefe: 58,2cm

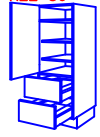
X 30 X 50  
X 40 X 60  
X 45



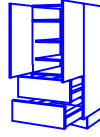
X 80  
X 90



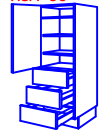
X2Z 40 X2Z 60  
X2Z 45  
X2Z 50



X2Z 80  
X2Z 90



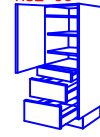
X3A 40 Q3A 60  
X3A 45  
X3A 50



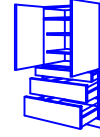
X3A 80  
X3A 90



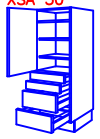
XSZ 40 XSZ 60  
XSZ 45  
XSZ 50



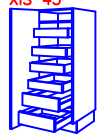
XSZ 80  
XSZ 90



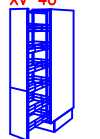
XSA 40 XSA 60  
XSA 45  
XSA 50



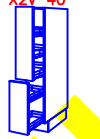
XIS 30 XIS 50  
XIS 40 XIS 60  
XIS 45



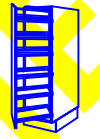
XV 27  
XV 30  
XV 40



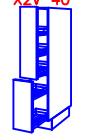
X2V 27  
X2V 30  
X2V 40



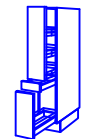
XVSW 30  
XVSW 40



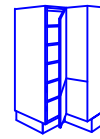
X2V 27  
X2V 30  
X2V 40



XVFSZ 30  
XVFSZ 40

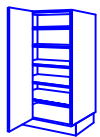


X 9090

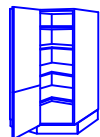


**für Einbaugeräte**

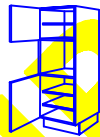
XE 115



XVD 105  
XVD 90



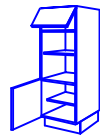
XB 350



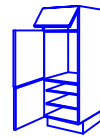
XM 351



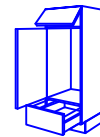
XMB 411



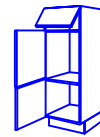
XK 100



XKZ 150



XKK 501



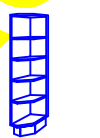
XMKZ 451



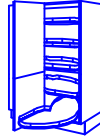
XXZ 65K



XES



XLK

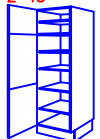


**Hochschränke Z-Höhe**

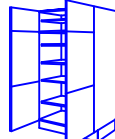
Korpshöhe: 217,6cm

Schranktiefe: 58,2cm

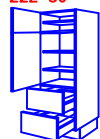
Z 30 Z 50  
Z 40 Z 60  
Z 45



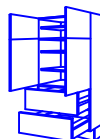
Z 80  
Z 90



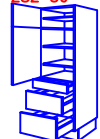
Z2Z 40 Z2Z 60  
Z2Z 45  
Z2Z 50



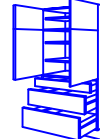
Z2Z 80  
Z2Z 90



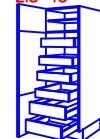
ZSZ 40 ZSZ 60  
ZSZ 45  
ZSZ 50



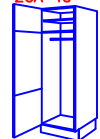
ZSZ 80  
ZSZ 90



ZIS 30 ZIS 50  
ZIS 40 ZIS 60  
ZIS 45

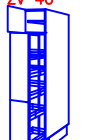


ZGA 30 ZGA 50  
ZGA 40 ZGA 60  
ZGA 45

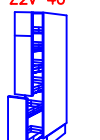


**für Einbaugeräte**

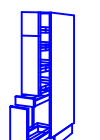
ZV 27  
ZV 30  
ZV 40



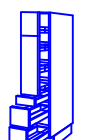
Z2V 27  
Z2V 30  
Z2V 40



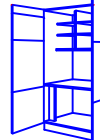
ZVFSZ 30  
ZVFSZ 40



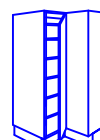
ZVZ 30  
ZVZ 40



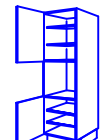
ZAC 120



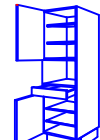
Z 9090



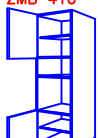
ZB 350



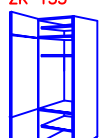
ZM 350



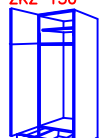
ZMB 410



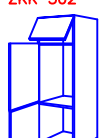
ZK 155



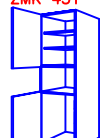
ZKZ 150



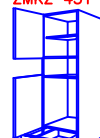
ZKK 502



ZMK 451



ZMKZ 451



ZXZ 65



alle Schrankhöhen- Angaben zuzüglich Sockel + Arbeitsplatte